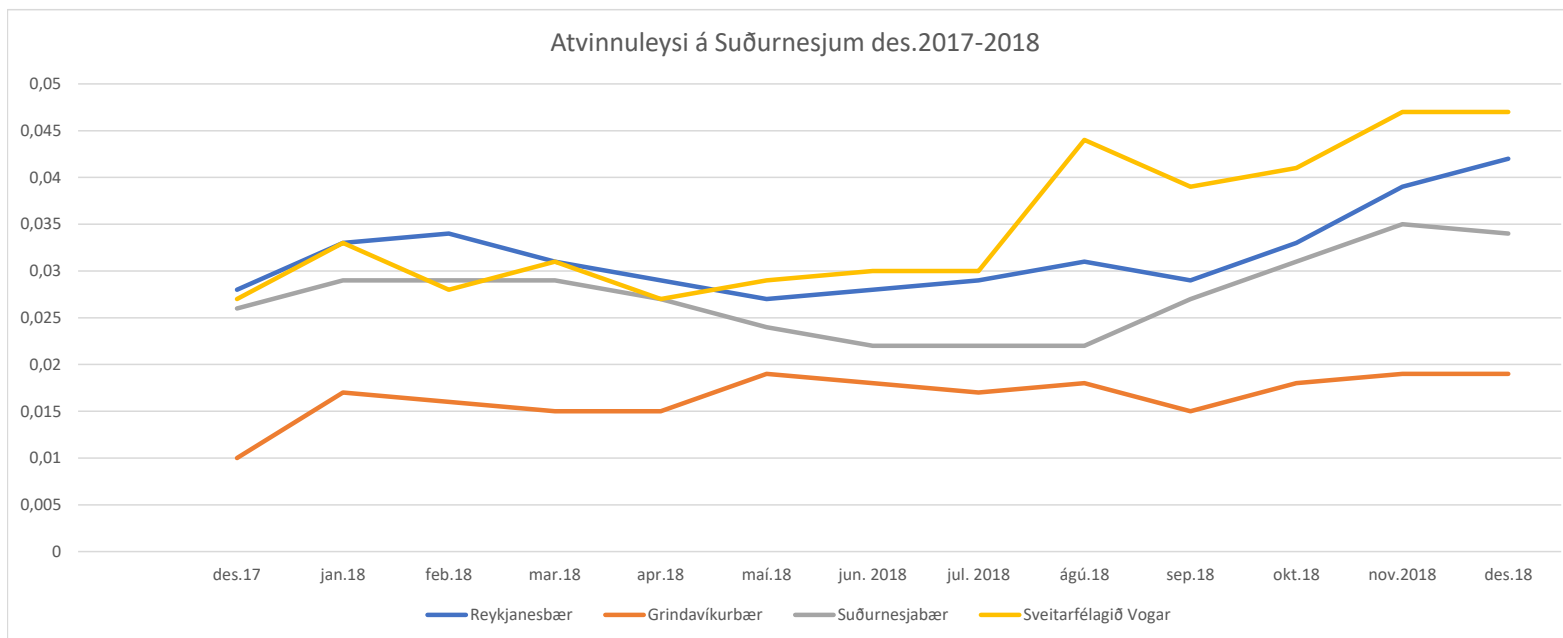


	des.17	jan.18	feb.18	mar.18	apr.18	maí.18	jun. 2018	júl. 2018	ágú.18	sep.18	okt.18	nov.2018	des.18
<b>Reykjanesbær</b>	2,80%	3,30%	3,40%	3,10%	2,90%	2,70%	2,80%	2,90%	3,10%	2,90%	3,30%	3,90%	4,20%
<b>Grindavíkurbær</b>	1,00%	1,70%	1,60%	1,50%	1,50%	1,90%	1,80%	1,70%	1,80%	1,50%	1,80%	1,90%	1,90%
<b>Suðurnesjabær</b>	2,60%	2,90%	2,90%	2,90%	2,70%	2,40%	2,20%	2,20%	2,20%	2,70%	3,10%	3,50%	3,40%
<b>Sveitarfélagið Vogar</b>	2,70%	3,30%	2,80%	3,10%	2,70%	2,90%	3,00%	3,00%	4,40%	3,90%	4,10%	4,70%	4,70%
<b>Höfuðborgarsvæðið</b>	2,10%	2,30%	2,30%	2,30%	2,20%	2,30%	2,30%	2,40%	2,30%	2,20%	2,40%	2,60%	2,60%
<b>Landsbyggðin, allir</b>	2,10%	2,40%	2,30%	2,20%	2,00%	1,90%	1,70%	1,80%	1,90%	1,80%	2,00%	2,30%	2,50%
<b>Suðvesturhornið, allir</b>	2,10%	2,30%	2,30%	2,30%	2,20%	2,30%	2,30%	2,40%	2,30%	2,20%	2,40%	2,60%	2,60%
<b>Önnur landsvæði, allir</b>	1,90%	2,20%	2,10%	2,00%	1,80%	1,70%	1,50%	1,70%	1,70%	1,70%	1,90%	2,10%	2,30%



**Fjöldi starfandi**  
**Reykjanesbær**  
**Grindavíkurbær**  
**Suðurnesjabær**  
**Sveitarfélagið Vogar**

**des.18 atvinnul**  
**11.154**    **468**  
**1.906**    **36**  
**1.984**    **67**  
**778**      **37**